

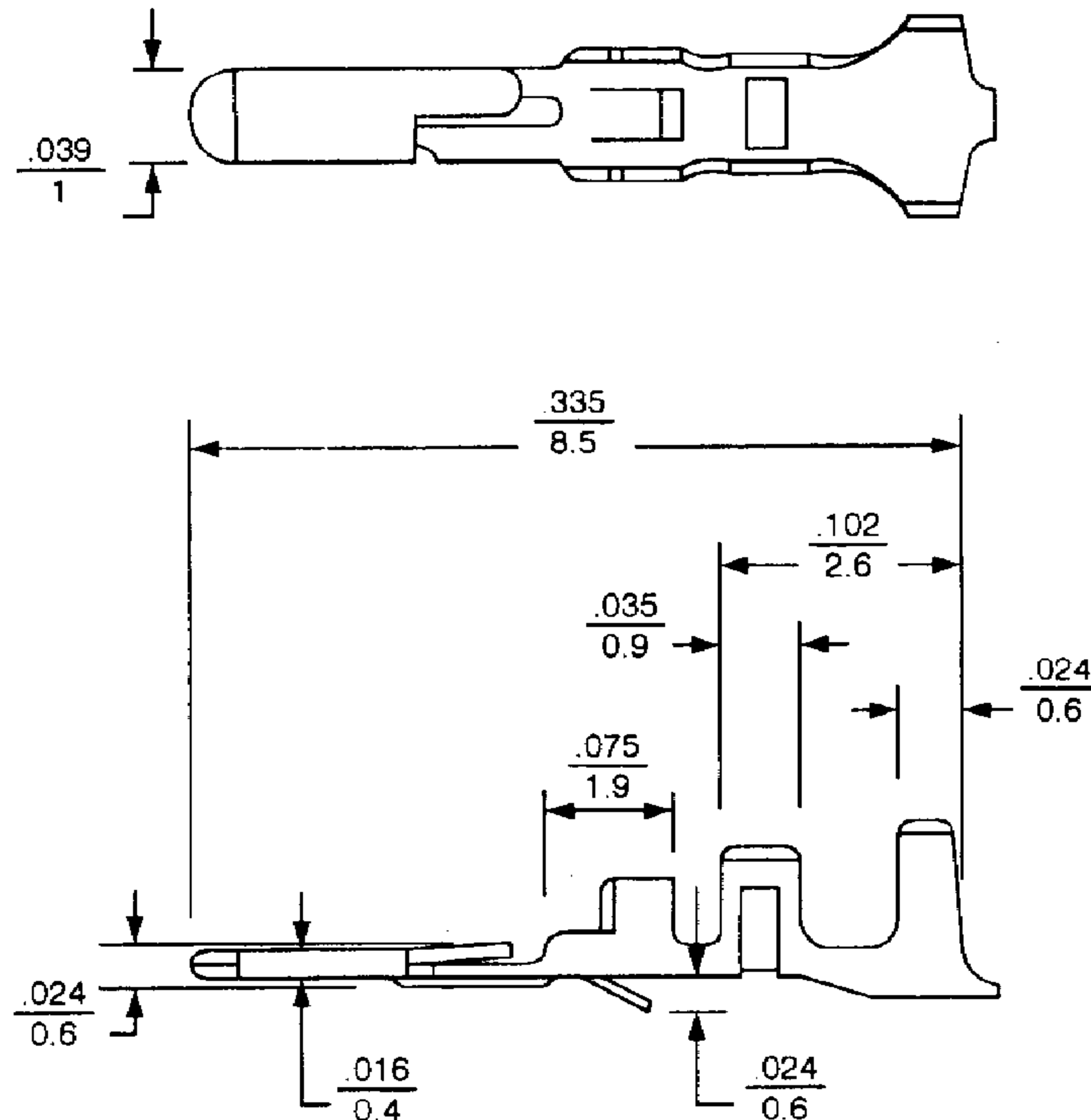
.079" (2.0mm) Center Wire-to-Wire System

20010TM Series

Male Crimp Terminal

- Low profile
- Tin plated phos. bronze
- Used in 20010HF-N series housing
- Wire range: AWG #24 ~ 28
- Insulation diameter: ϕ 1.4 mm max.
- Strip length: 1.7 ~ 2.3mm

inches
mm

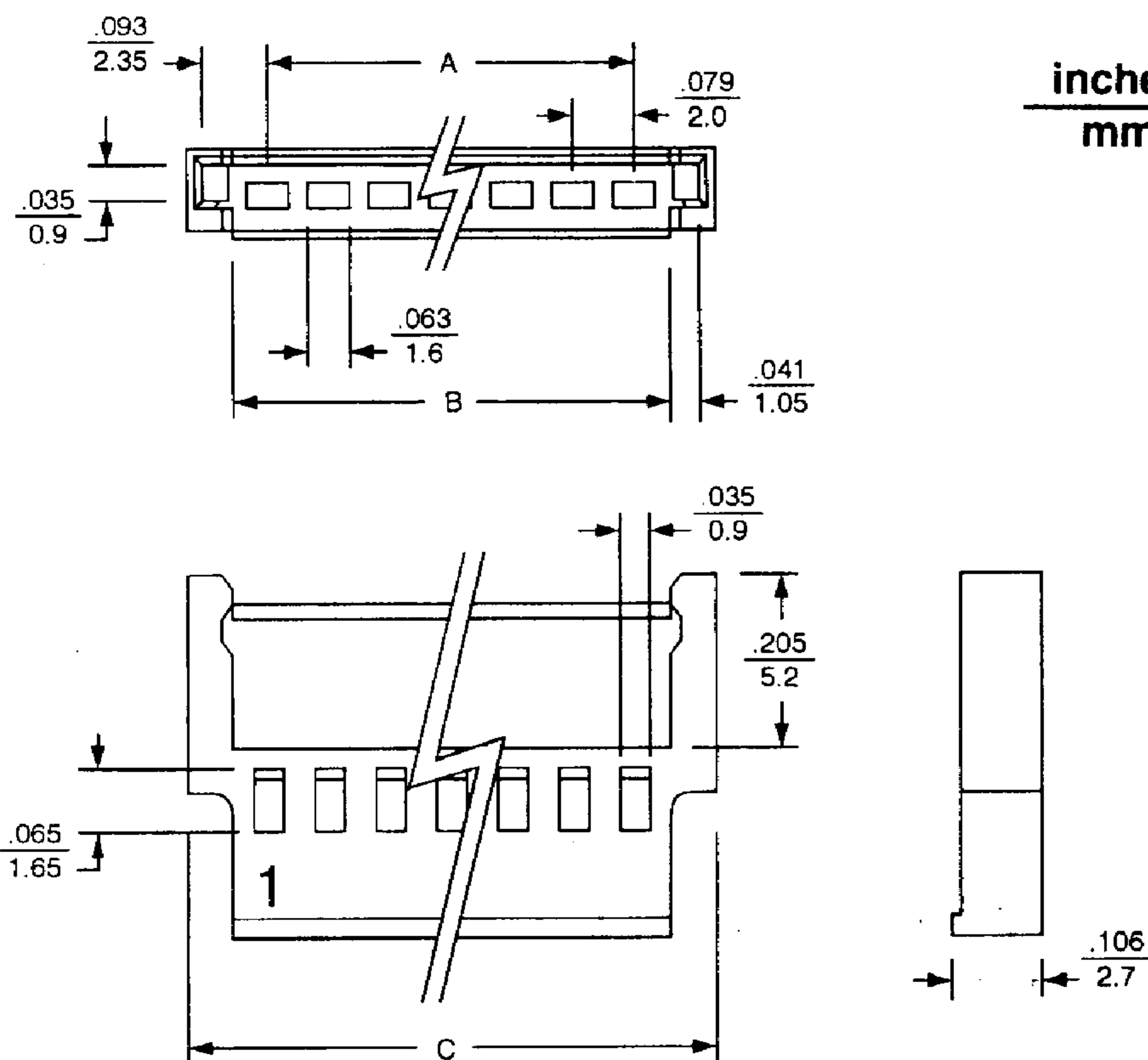


20010HF-N

Plug Housing

- 2 ~ 10 Circuits available
- Wire to wire application
- Low profile
- Polyester, UL 94V-0
- Accepts 20010TM terminal

inches
mm



Dimensional Information - in (mm)

Circuits	Dim. A	Dim. B	Dim. C	Circuits	Dim. A	Dim. B	Dim. C
2	.079 (2.0)	.181 (4.6)	.315 (8)	7	.472 (12.0)	.575 (14.6)	.709 (18)
3	.157 (4.0)	.260 (6.6)	.394 (10)	8	.551 (14.0)	.654 (16.6)	.787 (20)
4	.236 (6.0)	.339 (8.6)	.472 (12)	9	.630 (16.0)	.732 (18.6)	.866 (22)
5	.315 (8.0)	.417 (10.6)	.551 (14)	10	.709 (18.0)	.811 (20.6)	.945 (24)
6	.394 (10.0)	.496 (12.6)	.630 (16)				